

## Ford E-Catalog Advantage Integration

AutoSoft DMS integrates with Ford E-Catalog Advantage. The integration allows you to build a shopping list and transfer it to AutoSoft DMS Parts Queries screen. Once you pull the shopping list to the Parts Queries screen, you can apply the shopping list to a counter slip, service repair order, order que, customer quote, or purchase order.

## Verifying the Communication Folder

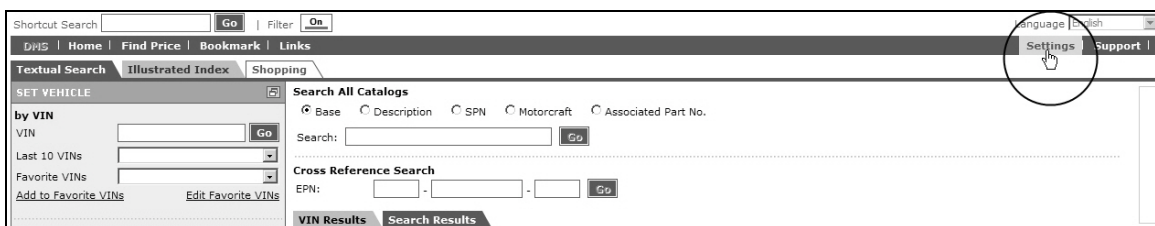
When you select to send a shopping list to the DMS, the E-Catalog Advantage Website will save the file to the location you specify in the E-Catalog settings (reviewed in the next section). AutoSoft requires the file to go to C:\DCS2DSP. You will need to verify this folder exists on your computer before you can use the integration.

1. Click the **My Computer** icon on the desktop.
2. In My Computer, double-click the **local disk (C:)**.
3. Verify you see a folder named **DCS2DSP**.
4. If the folder does not exist, you must add it. Click **File**, point to **New**, and click **Folder**. Then type **DCS2DSP** and the folder name.

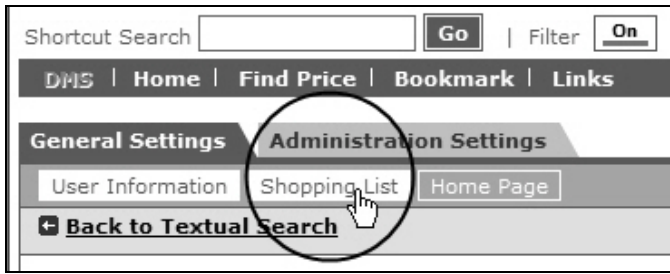
## Verifying the E-Catalog Settings

In order for the Ford E-Catalog Advantage Integration to communicate with your AutoSoft DMS, you must verify the Shopping List settings on the Ford E-Catalog Advantage Website.

1. Log on to the Ford E-Catalog Advantage Website.
2. Click **Settings** on the top-right side of the screen.



3. Click **Shopping List** on the left side of the screen.



4. Verify the following fields are set to the specified settings:

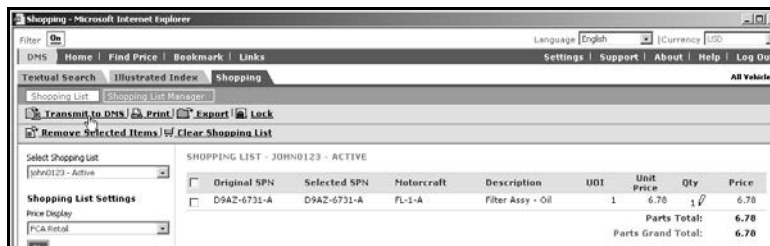
- **Export format:** Select **TXT**
- **Set Export File Name:** Type **ford-ecat**.
- **Set target directory:** Type **C:\DCS2DSP\ford-ecat.txt**
- **DMS Transfer Method:** The **Use DMS file exchange transfer method** box must be selected (checked).

5. You can set all other setting based on your preferences.
6. Click **Update** to save the settings.

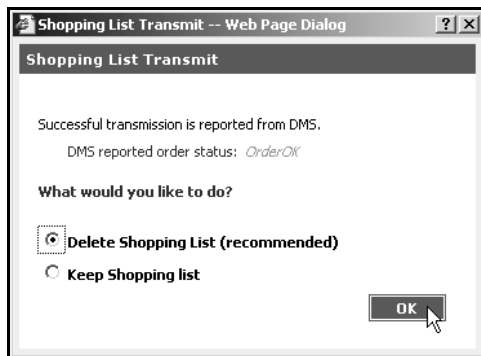
## Transferring Shopping Lists

Once you generate a shopping list on Ford E-Catalog Advantage, you can transfer it to AutoSoft DMS. You can then load the list on the Parts Queries screen in the DMS Parts Inventory module and apply the shopping list to a counter slip, service repair order, order que, customer quote, or purchase order.

1. Build the shopping list.
2. Click the **Shopping** tab.
3. Select the shopping list from drop-down list.
4. Click **Transmit To DMS**.

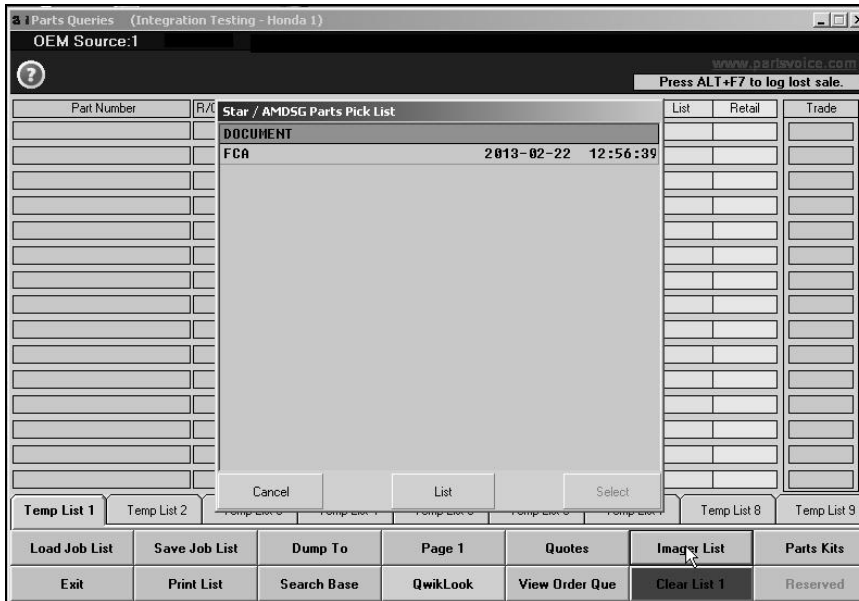


5. You will see a message indicating the transmission was successful and asking you what you want to do with the list. By default, the **Delete Shopping List** option is selected. If you want to keep the shopping list, click to select **Keep Shopping List**. Click **OK** to continue.

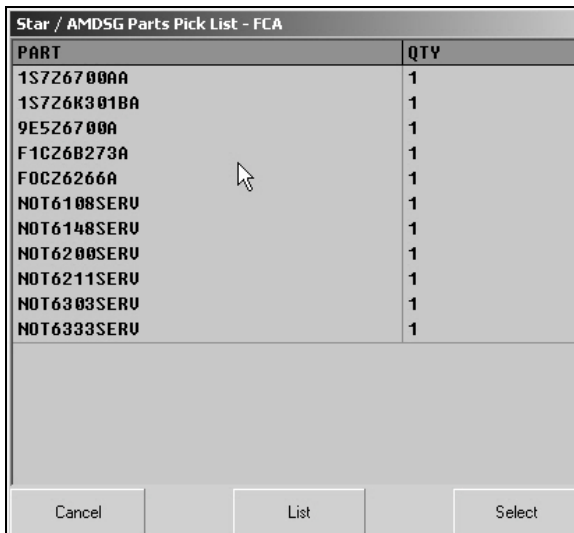


6. In your ASI DMS program, click **Parts Inventory** on the main menu.
7. Click **Part Queries** on the Parts Inventory menu. The Parts Queries screen appears.

- Click **Imager List**. The system displays all the available shopping lists.



- In the list, click the shopping list you transferred to AutoSoft DMS. The system displays the parts on the shopping list.



- Click **Select**.
- Click **Yes** or **No** when prompted to indicate if you want to delete the list.
- The list fills in on the Parts Queries screen.
- Use the **Dump To** button to add the list to a counter slip, repair order, the order que, a customer quote, or a purchase order.