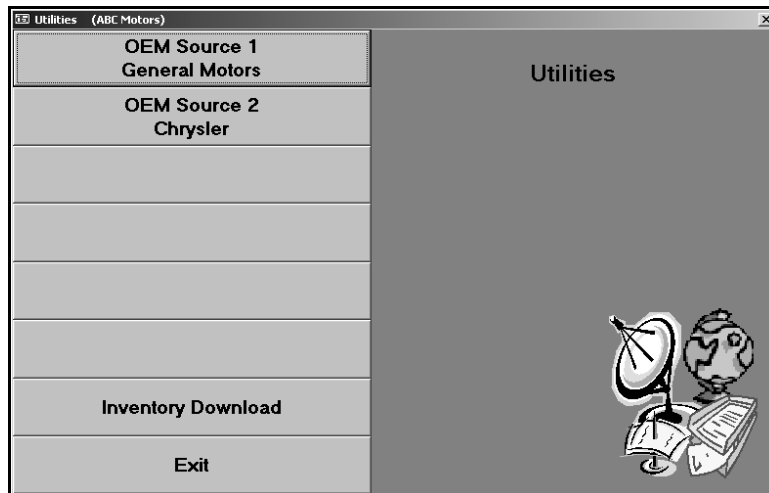


## Chapter 16 Utilities

You use the Utilities menu to download parts files to various manufacturers. The button descriptions on this menu are determined by the setup for your inventory sources. When you set up the operating defaults for each inventory source in the System Setup, you specified the parts price tape path for each source. The system looks at the parts price tape mapped for the first six inventory sources. If there is a utility associated with the manufacturer, the system displays the manufacturer's name for each source on the first six buttons on this menu.

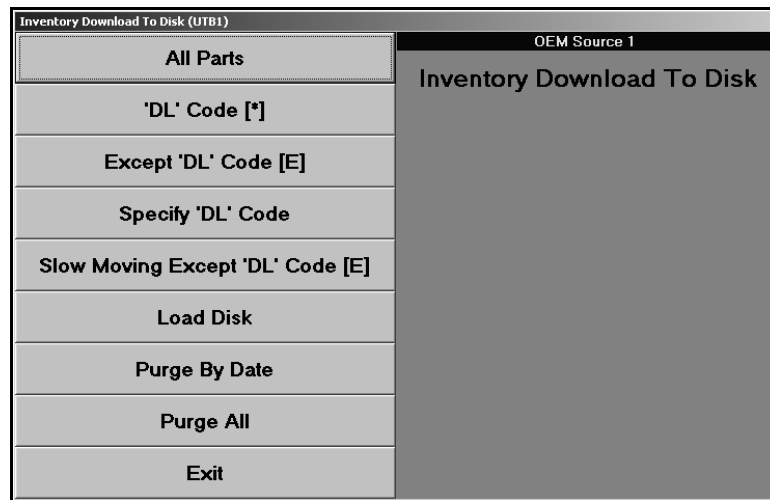
For example, if inventory source 1 is mapped to a General Motors price tape, the first button on this menu would read, "General Motors." If inventory source 2 is mapped to a Chrysler parts price tape, the second button on this menu would read, "Chrysler," and so on. Blank buttons represent inventory sources that are not mapped to a parts price tape or manufacturers that do not have parts interface utilities associated with them.



To use a utility, click the button on the menu that corresponds to the manufacturer. Once you select the corresponding dealer communication option, press F1 for instructions explaining how to use each menu and screen in your manufacturer-specific parts interface program.

## Inventory Download

The **Inventory Download** button opens the Inventory Download To Disk menu. You use this menu to download your inventory to a disk, to load parts locator files from a disk, and to delete parts locator files. Whether you are downloading or loading parts files, you should always ensure you are in the correct inventory source before you begin. The header on the right side of the screen indicates the current inventory source. If this is not the correct source, click the header (or press F5) to select the correct source.



### Downloading Parts to a Disk

The first five menu options allow you to specify if you want to download all parts or just parts with a specific parts locator download code. The download code is located on the Supplemental Data screen in the Master Inventory file. You can enter any letter needed as the download code on the Supplemental Data screen, but **E** and **\*** are the most common. Parts flagged **E** are exclude from the download, and parts flagged **\*** represent the parts that you want to download. You can create other user-defined codes that represent whatever you want them to represent.

1. Click the button that corresponds to the download option you want to select.
2. The system warns you to ensure you are in the correct inventory source. Click **OK** to acknowledge the message.
3. If you selected to specify the download code, type the code you want to use.
4. Type the drive letter where you want to download the files.
5. Click **Yes** when prompted to verify you want to download the files.
6. If you selected to download the files to drive A, the system prompts you to place a formatted disk in the selected drive. Verify there is a disk in the drive, and click **OK** (or press ENTER) to continue.
7. The system displays a "Did That" message when it is finished downloading the files. Click **OK** to acknowledge the message.

## Load Disk

Use this button to load a parts locator disk to the current inventory source.

1. Click **Load Disk**.
2. The system warns you to ensure you are in the correct inventory source. Click **OK** to acknowledge the message.
3. Type the drive letter where the parts locator disk is loaded.
4. Click **Yes** when prompted to verify you want to download the files.
5. The system displays a “Did That” message when it is finished downloading the files. Click **OK** to acknowledge the message.

## Purge by Date

Use this button to delete the parts locator files for a specific date.

1. Click **Purge By Date**.
2. The system warns you to ensure you are in the correct inventory source. Click **OK** to acknowledge the message.
3. Type the date for the parts locator files you want to delete. Type the date in an eight-character format with or without slashes (mm/dd/yyyy or mmddyyyy). If you type the date without slashes, press ENTER to continue.
4. Click **Yes** when prompted to verify you want to delete the files.
5. The system displays a “Did That” message when it is finished downloading the files. Click **OK** to acknowledge the message.

## Purge All

Use this button to delete all of the parts locator files.

1. Click **Purge All**.
2. The system warns you to ensure you are in the correct inventory source. Click **OK** to acknowledge the message.
3. Click **Yes** when prompted to verify you want to delete the files.
4. The system displays a “Did That” message when it is finished downloading the files. Click **OK** to acknowledge the message.

