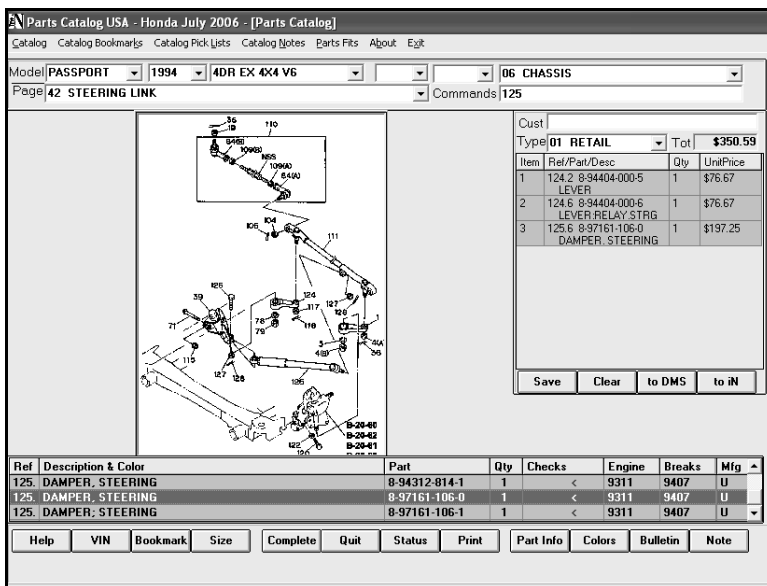


Autosoft FLEX DMS integrates with Honda Parts Catalog USA. The integration allows you to transfer shopping lists to FLEX DMS and view the lists of the Parts Queries screen. From the Parts Queries screen, you can apply the shopping list to a counter slip, service repair order, order que, customer quote, or purchase order.

Transferring Shopping Lists

1. Log on to Honda Parts Catalog USA.
2. Build the shopping list. The parts you add will appear in a list in the top-right corner of the screen.



The screenshot shows the 'Parts Catalog USA - Honda July 2006' interface. The model is 'PASSPORT 1994' and the part is '4DR EX 4X4 V6'. The page is '42 STEERING LINK' and the command is '125'. A diagram of the steering link assembly is shown in the center. On the right, a shopping list table is displayed with a total of \$350.59.

Item	Ref/Part/Desc	Qty	Unit Price
1	124.2 8-94404-000-5 LEVER	1	\$76.67
2	124.6 8-94404-000-6 LEVER,RELAY,STRG	1	\$76.67
3	125.6 8-97161-106-0 DAMPER, STEERING	1	\$197.25

Buttons: Save, Clear, to DMS, to iN

Ref	Description & Color	Part	Qty	Checks	Engine	Breaks	Mfg
125.	DAMPER, STEERING	8-94312-814-1	1	<	9311	9407	U
125.	DAMPER, STEERING	8-97161-106-0	1	<	9311	9407	U
125.	DAMPER, STEERING	8-97161-106-1	1	<	9311	9407	U

Buttons: Help, VIN, Bookmark, Size, Complete, Quit, Status, Print, Part Info, Colors, Bulletin, Note

- Click to **DMS** under the shopping list.

Cust			
Type	01 RETAIL	Tot	\$350.59
Item	Ref/Part/Desc	Qty	UnitPrice
1	124.2 8-94404-000-5 LEVER	1	\$76.67
2	124.6 8-94404-000-6 LEVER;RELAY;STRG	1	\$76.67
3	125.6 8-97161-106-0 DAMPER; STEERING	1	\$197.25
Save Clear to DMS to iN			

- On the next screen, verify the parts list is correct.

Parts Catalog USA - Honda July 2006 - [Picklist to DMS]

Catalog Catalog Bookmarks Catalog Pick Lists Catalog Notes Parts Fits About Exit

Item	Reference	Description	Part
1	124.2	LEVER	8-94404-000-5
2	124.6	LEVER;RELAY;STRG LIN	8-94404-000-6
3	125.6	DAMPER; STEERING	8-97161-106-0

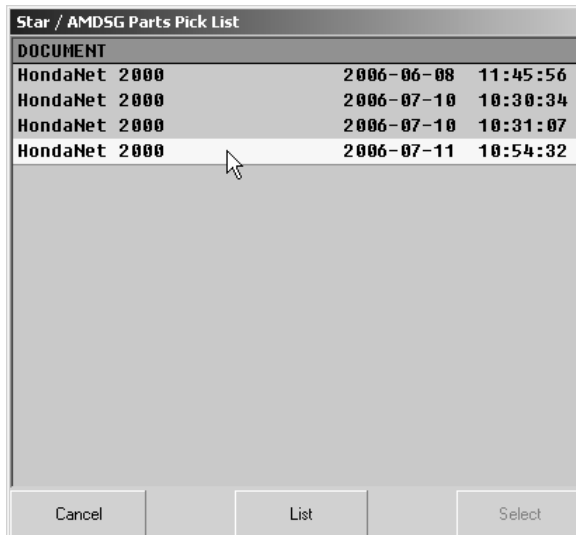
Selected: 3
Total: 3

Help Complete Quit Select All Clear All

- Click **Complete**. This saves the list to **c:\dcs2dsp**.
- You can now view the list on the parts Queries screen is ASI DMS.

Viewing Shopping Lists in ASI DMS

1. In your ASI DMS program, click **Parts Inventory** on the main menu.
2. Click **Part Queries** on the Parts Inventory menu. The Parts Queries screen appears.
3. Click **Imager List**.
4. In the list, click the shopping list you transferred to ASI DMS.



5. Once you select the list, the screen will display a list of parts on the list.
6. Click **Select**.
7. When prompted to indicate if you want to delete the list, click **Yes** or **No**.
8. The list fills in on the Parts Queries screen. Use the **Dump To** button to dump the list to a counter slip, repair order, the order que, a customer quote, or a purchase order.