

The Autosoft FLEX DMS Parts Inventory module allows ford dealers to automatically stock their Ford parts orders. This document reviews the Ford Restock feature. This feature works with your Ford DOW communications interface in Autosoft FLEX DMS.

## Stocking the Shipment

Once you receive the parts order, you receipt the received parts into inventory. This updates the inventory files in your Autosoft FLEX DMS system.

1. Click **Resupply & Returns** on the Parts Inventory menu.
2. Click **Ford Communications** on the bottom right-hand corner of the Resupply & Return menu. The Ford Communications menu appears.
3. Click **Stock In Ford Shipment**. The Receipt Parts Shipment screen appears.
4. In **Shipment #**, select the shipment from the drop-down list.
5. The shipment information fills in on the screen.

Receipt Parts Shipment - Ford Motor Company

Shipment #: 69700744

Shipment Date	Carton Number	Part Number	Qty Ord	Qty Shp	Qty B/O	Qty Rcvd	Unit Issue	Adv Code	QD CD	PDC REF	ORD NBR	Stock In?
12/20/06		CORE		1		1		J			69	12196
	93397695	F6A2 6310 AB	1	1		1	EA				69	12193
	93397695	F6A2 6310 AB	1	1		1	EA				69	19999
	93397695	F4A2 6701 A	2	2		2	EA				69	19999
	93397695	XW4Z 8255 CA	1	1		1	EA				69	12196
		XW4Z 8592 AA	1					X MEL			69	12196
		XW4Z 8592 BD	1					X MEL			69	12196
		F75Z 9054 BB	1					X NPD			69	12196
	91397682	2L32 1A131 AA	1	1		1	EA				69	12196
	93397695	5C32 10732 BA	1	1		1	EA				69	12196
	91397685	VL82 15200 AA	1	1		1	EA				69	12196
	91397684	5F2Z 3079 BA	1	1		1	EA				69	12196
	93397695	F71Z 17787 AA	1	1		1	EA				69	12196
	93397695	F71Z 17788 AA	1	1		1	EA				69	12196
	93397695	F71Z 17795 BA	1	1		1	EA				69	12196
	93397695	F71Z 17796 BA	1	1		1	EA				69	12196
	91397688	1L22 18125 BA	1	1		1	EA				69	12192
	91397694	XC22 18478 BA	1	1		1	EA				69	19999
	91397691	5F9Z 2C026 BA	2	2		2	EA				69	19999
	91397687	2L22 3K185 BA	1	1		1	EA				69	12193
	93397695	5L2Z 4L616 AB	3	3		3	EA				69	19999
	93397695	VL8Z 8A193 AA	1	1		1	EA				69	12196

Exit    Stock In

6. Edit the received quantity as needed, and press ENTER.
7. If an **F** (meaning Allocated Order) appears in the **Adv Code** column, you will need to confirm the part should be stocked because it will not have a corresponding order record in Autosoft FLEX DMS. If you wish to stock the part automatically, type **Y** in the **Stock In?** column.
8. When you are finished editing the shipment, click **Stock In**.
9. Click **OK** when prompted to verify you want to stock in the selected order. This confirms that the orders listed in the shipment should be modified according to your edits and that the orders should be stocked in.

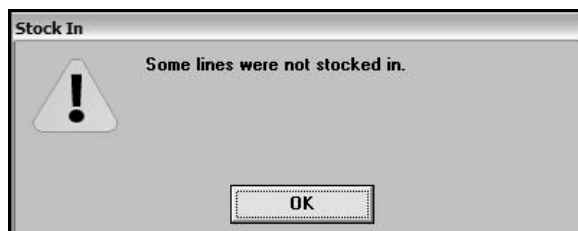


10. You will see the status of the stocking process as the system works. Do not disturb the system during this process.
11. When the stocking process is complete, you will see one of two messages.

- If there were no exceptions on the list, you will see a message indicating the shipment has been stocked in. Click **OK** to acknowledge the message.



- If there were exceptions, you will see a message stating "Some Lines Could Not Be Stocked In." Exceptions are left behind in the list after the stock in process completes. Please see "Understanding Stocking Exceptions" on page 3 for an explanation of the exceptions Ford includes in the shipment document and an explanation of how Autosoft FLEX DMS handles these exceptions. Click **OK** to acknowledge the message.



12. When the process is complete, the part records in the inventory will be updated, and the applicable order(s) will be deleted from the system.

## Understanding Stocking Exceptions

The **Adv Code** identifies any stocking exceptions Ford has applied to the part. This code determines how the Autosoft FLEX DMS system will stock the part. Below is a list of the possible codes.

### **A—Replaced by an alternate part (Code G)**

Shipped Quantity = 0

This is the previous number in the supersession chain. This part will not be receipted into inventory. It will remain on order in the system to avoid confusion. It is the Parts Manager's responsibility to manually delete the part from the order document and to change the part number in the Autosoft FLEX DMS system.

### **B—Backordered**

Shipped Quantity = 0

This part is marked as backordered in the Autosoft FLEX DMS system, and the part's record in the order document is left active in the Autosoft FLEX DMS system.

### **D—Referred as indicated**

Shipped Quantity = 0

This part is ignored when stocking in the shipment. Another shipment document will be provided for this. The part will arrive in another shipment later in the day or the next day.

### **F—Allocated Order**

Shipped Quantity > 0

Ford inserts this part into the order. It will not exist on the order document in the Autosoft FLEX DMS system. The user has the choice to receipt or to skip the part when editing the shipment document.

### **G—Replacing Part**

Shipped Quantity > 0

This is the new number in the supersession chain. This part will need to be manually receipted.

### **J—Cancelled – No record of this item**

Shipped Quantity = 0

This part is not a Ford part and is ignored when stocking in. It will remain on order in the system to avoid confusion. This part will never arrive at the dealership.

It is the Parts Manager's responsibility to manually delete the parts from the order document.

### **Q—Hold for stock in transit**

Shipped Quantity = 0

This part is ignored when stocking in the shipment.

### **V—Direct ship from supplier**

Shipped Quantity = 0

This part is ignored when stocking in the shipment. Another shipment document will be provided for this. The part will arrive in another shipment later in the day or the next day.

### **X—Redirected to stocking PDC**

### **Y—Referred from another PDC**

### **Z—Redirect from another PDC**

Shipped Quantity = 0

This part is ignored when stocking in the shipment. Another shipment document will be provided for this. The part will arrive in another shipment later in the day or the next day.

### **All other part lines**

These parts will be receipted in full minus any edits made due to packing errors.