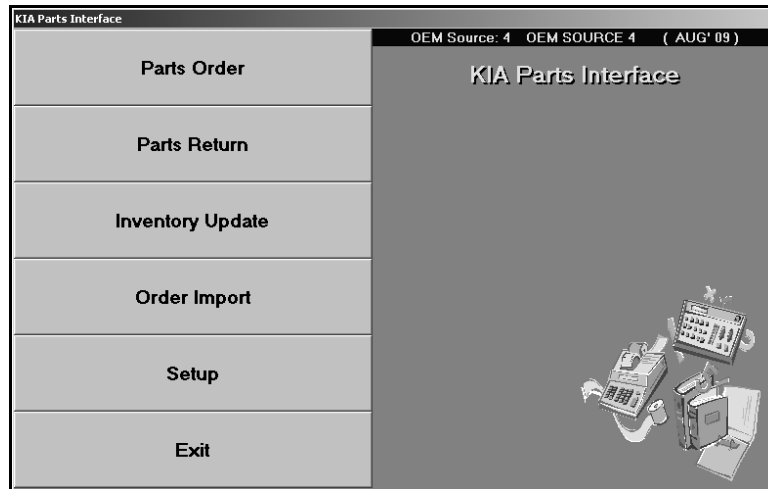


This utility allows Kia dealers to download parts orders, parts returns, and inventory information to Kia WebDCS. Because the interface integrates with the AutoSoft DMS Parts Inventory module, it saves you time since you create parts orders and returns in the AutoSoft Parts Inventory as you normally do and simply pull the files to the interface for transmission. No repetitive data entry required.



## Verifying Setup Information

In order to use the Kia Parts Interface, you must verify that the proper setup information has been completed. This information is required for the interface to work properly.

## Verifying the Operating Parameters

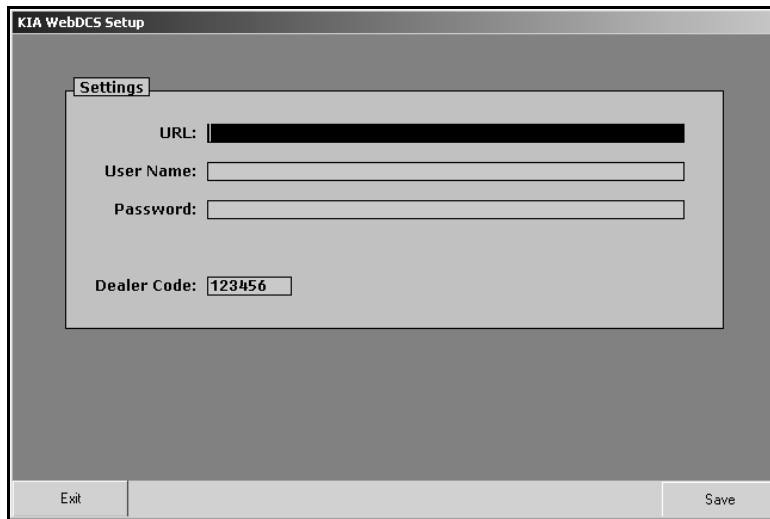
First, ensure that your Kia inventory source is properly mapped to a Kia price tape and that your dealer code is correct.

1. Click **Setup & Updates** on the Parts Inventory main menu.
2. Click **Operating Defaults** on the System Setup & Updates menu.
3. Verify that your Kia dealer code appears in the **P&A Code** field.
4. Verify that the **Path to OEM Part Tape** field is mapped to a Kia Part price tape.
5. Click **Save**, and click **OK** when prompted you must set the parameters for all inventory sources.
6. Click **Exit** until you are back at the Parts Inventory main menu.

## Verifying the Parts Interface Setup

Next, you must verify the interface setup. All available Kia interfaces have a link to a common setup screen for communications with Kia WebDCS. The dealership administrator should enter the information that will be used to communicate with Kia WebDCS.

1. Click **Utilities** on the Parts Inventory main menu.
2. Click **Kia** on the Utilities menu. The Kia Parts Interface menu appears.
3. Click **Setup**. The Kia WebDCS Setup screen appears.



The screenshot shows a web-based setup screen titled "KIA WebDCS Setup". It features a "Settings" tab and a central form with the following fields: "URL:" (with a blacked-out value), "User Name:", "Password:", and "Dealer Code:" (with the value "123456"). At the bottom of the form are two buttons: "Exit" on the left and "Save" on the right.

4. Verify the information on this screen is correct. Only an administrator should edit information on this screen.
5. Click **Save** to save the information or **Exit** to close the screen without saving the information.

## Downloading Parts Orders

1. Generate a parts order and convert the order into a purchase order as you normally do in the AutoSoft DMS Parts Inventory module.
2. Click **Kia Communications** on the Resupply & Returns menu. The Kia Parts Interface menu appears.

**Tip:** You can also access the utility by clicking **Utilities** on the Parts Inventory main menu, and then clicking **Kia**.

- Click **Parts Orders**. The Kia Parts Order Interface screen appears.

- Use the **P.O. Number** list to select the purchase order. The list displays all of the parts purchase orders created for the Kia inventory source.
- When you select the purchase order, the window on the right side of the screen displays a list of the parts on the purchase order for your reference.
- Use the **Order Type** drop-down list to specify if this is a stock order or an emergency order.
- Use the **Special Instructions** field to record any information that needs to be submitted with the order.
- Click **Submit**.
- Click **OK** when prompted to verify you want to transmit the order.
- The status screen displays the results of the file transfer. A green check mark indicates the file was successfully loaded into KIA WebDCS. (A red "X" indicates the file could not be sent. You will need to verify the order information is correct.) Click **Close** to acknowledge the message.
- The system returns you to the Kia Parts Interface menu.
- Once you submit the order, you must log on to [www.KDealer.net](http://www.KDealer.net) to finalize the order.

**Note:** AutoSoft does not submit customer information with the orders. If you want customer information attached to the order, you must edit this information on [www.KDealer.net](http://www.KDealer.net) when finalizing the order.

## Downloading Parts Returns

1. Generate a parts return and convert it into a return document as you normally do in the AutoSoft DMS Parts Inventory module.
2. Click **Kia Communications** on the Resupply & Returns menu. The Kia Parts Interface menu appears.
3. Click **Parts Return**. The Kia Part Return Interface screen appears.

The screenshot shows the 'KIA Parts Return Interface' window. At the top left, there is a dropdown menu labeled 'Transfer Parts Return-Document No.'. Below this is a 'Parts Return Header' section containing a 'Return Type: R07' label and a 'Dealer Comment:' text input field. At the bottom left, there is a 'Dealer Code: 123456' label and a 'Submit' button. At the bottom right, there is a 'Reset Form' button and a small icon of a folder with documents. On the right side of the window, there is a vertical pane titled 'Parts Return Detail' which is currently empty.

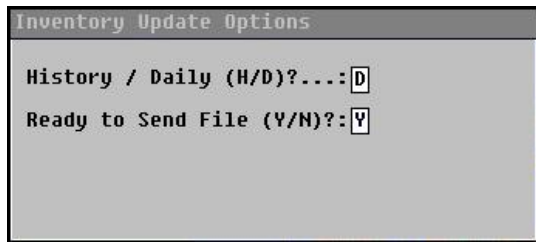
4. Use the **Document No.** list to select the return document.
5. When you select the document, the window on the right side of the screen displays a list of the parts on the return for your reference.
6. Use the **Order Comment** field to add any comments that are associated with the return. Line item comments are not available in ASI DMS.
7. Click **Submit**.
8. Click **OK** when prompted to verify you want to transmit the return.
9. The status screen displays the results of the file transfer. A green check mark indicates the file was successfully loaded into KIA WebDCS. (A red "X" indicates the file could not be sent. You will need to verify the order information is correct.) Click **Close** to acknowledge the message.
10. The system returns you to the Kia Parts Interface menu.

**Tip:** To review your return on KIA WebDCS, log on to webdcs.kdealer.net. Click the **Parts** tab, and click **Parts Return Entry/Inquiry** under **Dealer Parts Return**.

## Updating Inventory

Use the **Inventory Update** option to update your inventory to KIA WebDCS. You have the option of sending a daily file or a history file. The daily file includes the current inventory and the current month-to-date sales and lost sales for each part. The history file includes the same information as the daily file, but it also includes the sales history for the previous 12 months. The sales history pulls from the **Monthly Sales** section the Master Inventory screen. The current month is not included in the history file; the previous year's sales data for that month is sent instead.

1. Click **Inventory Update**.
2. Specify the type of file you want to send. Type **H** for a history file or **D** for a daily file.
3. Type **Y** in **Ready to Send File**.

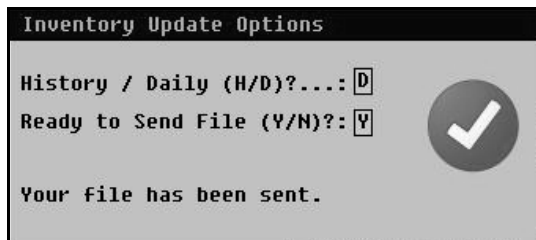


Inventory Update Options

History / Daily (H/D)?...:

Ready to Send File (Y/N)?:

4. The file is uploaded to Kia's FTP site.
5. If the upload was successful, you will see a "Your file has been sent" message and a green check mark.



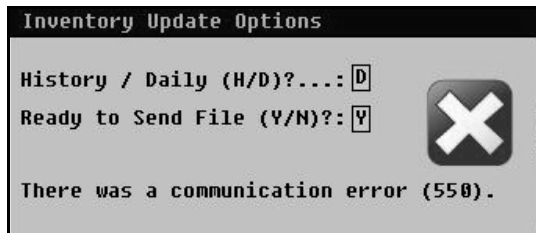
Inventory Update Options

History / Daily (H/D)?...:

Ready to Send File (Y/N)?:

Your file has been sent.

If the upload failed, you will see a "There was a communication error" message and a red X. Contact your network administrator for assistance.



Inventory Update Options

History / Daily (H/D)?...:

Ready to Send File (Y/N)?:

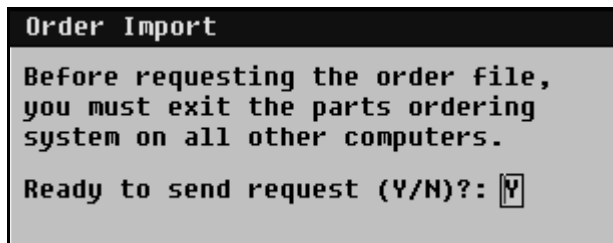
There was a communication error (550).

**Important:** If the user name and password for KIA WebDCS changes, you will be prompted for a new password. If you change the password, you must contact AutoSoft International at (800) 473-4630 to ensure the necessary changes are made to your Kia Interface.

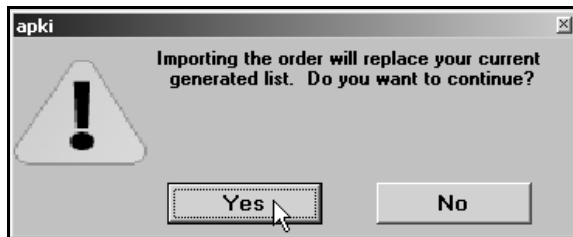
## Importing Orders

Use the **Order Import** button to download your parts order from KIA WebDCS. This interface will operate using your generated list. By using the generated list, AutoSoft allows you the option of rolling your order queue into your parts order once it has been imported.

1. Make sure the AutoSoft Parts Resupply is not open on any other computers.
2. Click **Order Import**.
3. Type **Y** in **Ready to Send Request**.



4. If a generated list already exists in the ordering system, the system will prompt you to confirm you would like to overwrite the existing list. You must click **Yes** to import the order.



5. When the system attempts to transfer the order from Kia to your computer, you will get a "success" or "failure" message.
6. When you see the "success" message, the order has been imported into your system, and the Kia order should be handled as if it were generated by the AutoSoft DMS Parts ordering system.