

Autosoft
FLEXTM

DMS

Hyundai SmartStock®
Additional SubSource Setup
Existing Level 1 Dealers



The following pages are a step-by-step setup resource for Autosoft Level 1 Hyundai dealers. Three additional SubSources will be created: 904, 905, and 906. Additionally, a non-SmartStock® source for aftermarket parts should be set up if not already in place. This source will be used when aftermarket parts are entered in the Hyundai franchise.

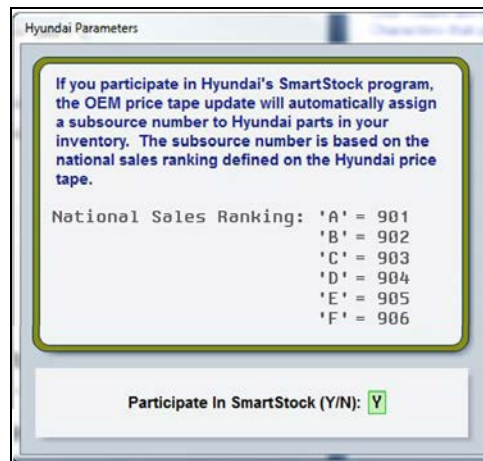
Setting up your SmartStock® SubSources involves:

- Setting up low and high days of supply
- Setting up phase-in/phase-out hits and months
- Setting up EOQ for the new sources
- Setting up new SubSources

Creating New SubSources

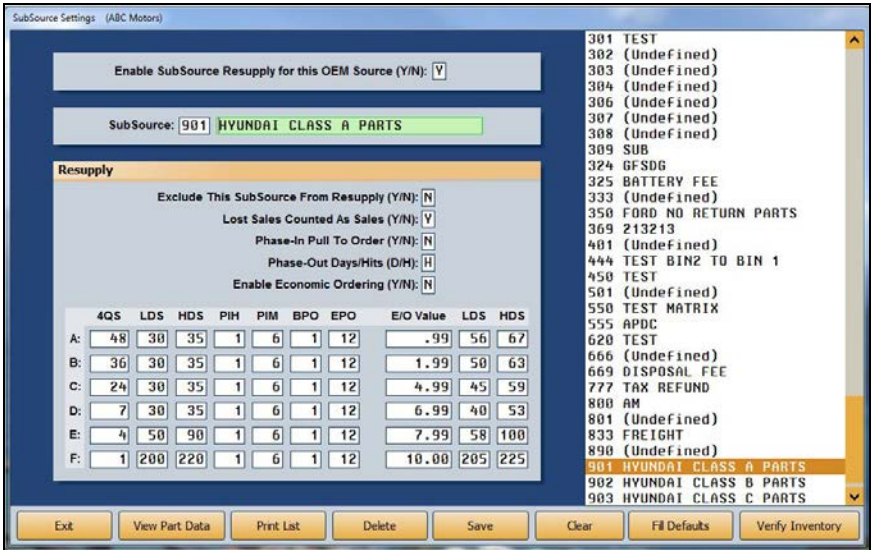
Use the following steps to set up sources 904 through 906 for collision parts. **Read these directions in their entirety and make sure you are running the latest FLEX DMS release before attempting setup.** This will save you time and reduce the risk of making errors.

1. From the FLEX DMS Parts Inventory main menu, click **Setup & Updates**.
2. Click **Operating Defaults**.
3. Enter **HY** in the **Manufacturer Code** field. If HY already appears in the field, retype it to bring up the SmartStock page.

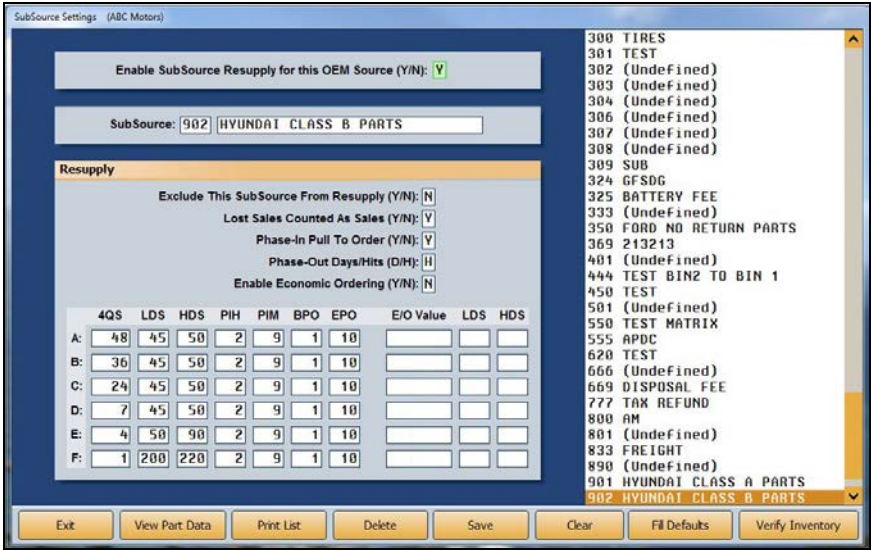


4. Enter **Y** in the **Participate in SmartStock (Y/N)** field.
5. Click **Save**.
6. An alert window will remind you that the settings in the window must be set for each source and that all users must be out of the Parts module to be sure the changes save properly. Click **OK** to dismiss the message.
7. Close FLEX DMS for the settings to take effect.
8. Relaunch FLEX DMS.
9. On the FLEX DMS startup menu, click **Parts**.
10. From the Parts main menu, click **Resupply & Returns**.
11. Click **Set Supply Parameters**.
12. Click **SubSource Management**.

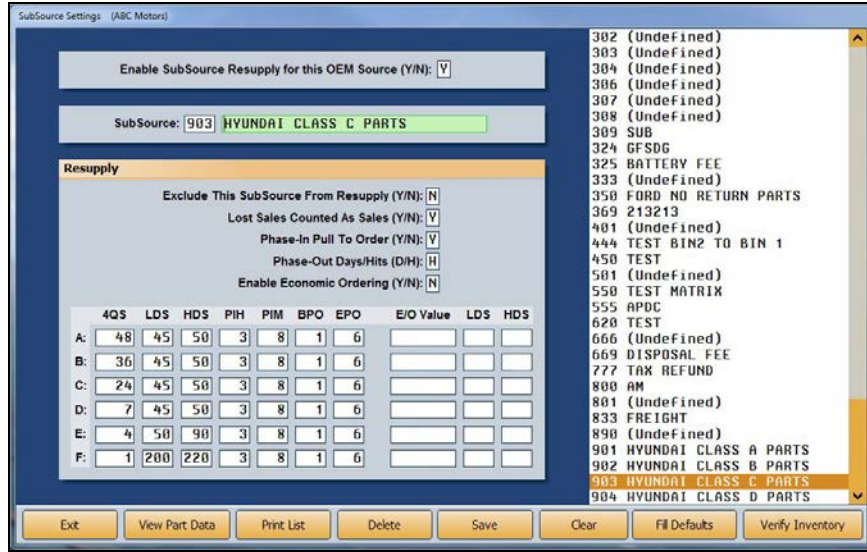
13. The screen will display available SubSources on the right. As an existing SmartStock user, you will need to verify that the values for 901 through 903 by clicking on **901**, **902**, and **903** and comparing the values on screen to those in the following images.



901 SubSource Settings Screen

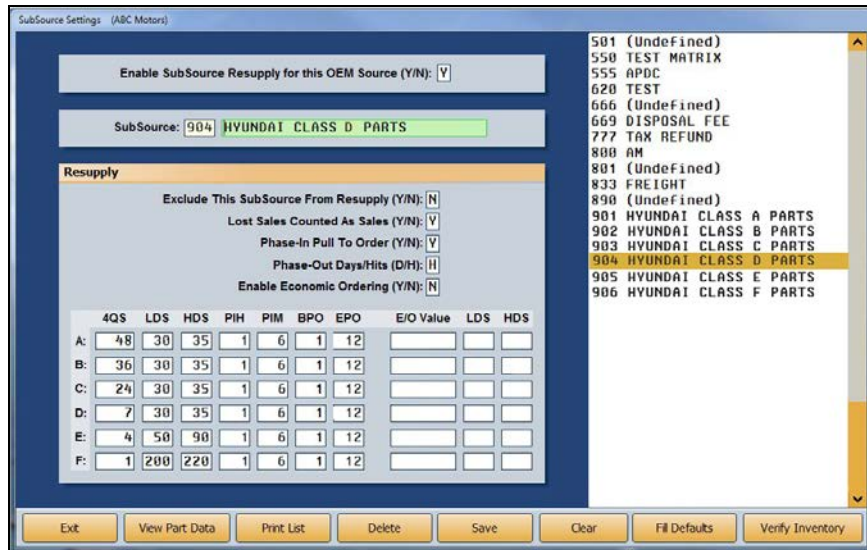


902 SubSource Settings Screen



SubSource 903 Settings Screen

- If you make any adjustments to the values for any of these SubSource settings screens, click **Save** before moving on to the next screen to ensure the changes are not lost.
- Click **904 Hyundai Class D Parts** in the right column to begin adding the new SubSource settings. The 904 SubSource Settings screen will open.



- Enter **Y** in the **Enable SubSource Resupply For This OEM Source (Y/N)** field.
- Type 904 in the **SubSource** field. Name the SubSource “Hyundai Class D Parts,” as recommended by Hyundai.

18. Ensure the values are as follows:

- **Exclude This SubSource From Resupply (Y/N): N**
- **Lost Sale Counted As Sales (Y/N): Y**
- **Phase-In Pull To Order (Y/N): Y**
- **Phase-Out Days/Hits (D/H): H**
- **Enable Economic Ordering (Y/N): N**

19. Enter the **4QS**, **LDS**, **HDS**, **PIH**, **PIM**, **BPO**, and **EPO** values exactly as shown.

20. Enter the **E/O Value**, **LDS**, and **HDS** values as shown.

21. When all values are entered, click **Save**.

22. On the SubSource Settings screen, select **905 Hyundai Class E Parts**.

SubSource Settings (ABC Motors)

Enable SubSource Resupply for this OEM Source (Y/N):

SubSource: 905 HYUNDAI CLASS E PARTS

Resupply

Exclude This SubSource From Resupply (Y/N): N

Lost Sales Counted As Sales (Y/N): Y

Phase-In Pull To Order (Y/N): Y

Phase-Out Days/Hits (D/H): H

Enable Economic Ordering (Y/N): N

	4QS	LDS	HDS	PIH	PIM	BPO	EPO	E/O Value	LDS	HDS
A:	48	45	50	2	9	1	10			
B:	36	45	50	2	9	1	10			
C:	24	45	50	2	9	1	10			
D:	7	45	50	2	9	1	10			
E:	4	50	90	2	9	1	10			
F:	1	200	220	2	9	1	10			

501 (Undefined)
550 TEST MATRIX
555 APDC
620 TEST
666 (Undefined)
669 DISPOSAL FEE
777 TAX REFUND
800 AM
801 (Undefined)
833 FREIGHT
890 (Undefined)
901 HYUNDAI CLASS A PARTS
902 HYUNDAI CLASS B PARTS
903 HYUNDAI CLASS C PARTS
904 HYUNDAI CLASS D PARTS
905 HYUNDAI CLASS E PARTS
906 HYUNDAI CLASS F PARTS

Exit View Part Data Print List Delete Save Clear Fill Defaults Verify Inventory

23. Enter **Y** in the **Enable SubSource Resupply For This OEM Source (Y/N)** field.

24. Type **905** in the **SubSource** field and name the SubSource “Hyundai Class E Parts,” as recommended by Hyundai.

25. Ensure the values are as follows:

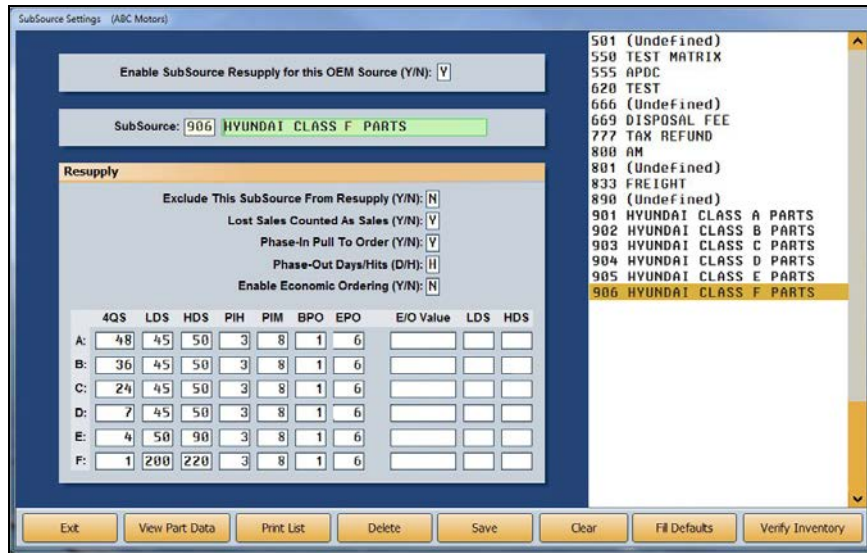
- **Exclude This SubSource From Resupply (Y/N): N**
- **Lost Sale Counted As Sales (Y/N): Y**
- **Phase-In Pull To Order (Y/N): Y**
- **Phase-Out Days/Hits (D/H): H**
- **Enable Economic Ordering (Y/N): N**

26. Enter the **4QS**, **LDS**, **HDS**, **PIH**, **PIM**, **BPO**, and **EPO** values exactly as shown.

27. Enter the **E/O Value**, **LDS**, and **HDS** values as shown.

28. When all values are entered, click **Save**.

29. On the SubSource Settings screen, select **906 Hyundai Class F Parts**.



30. Enter **Y** in the **Enable SubSource Resupply For This OEM Source (Y/N)** field.

31. Type **906** in the **SubSource** field and name the SubSource “Hyundai Class F Parts,” as recommended by Hyundai.

32. Ensure the values are as follows:

- **Exclude This SubSource From Resupply (Y/N): N**
- **Lost Sale Counted As Sales (Y/N): Y**
- **Phase-In Pull To Order (Y/N): Y**
- **Phase-Out Days/Hits (D/H): H**
- **Enable Economic Ordering (Y/N): N**

33. Enter the **4QS**, **LDS**, **HDS**, **PIH**, **PIM**, **BPO**, and **EPO** values exactly as shown.

34. Enter the **E/O Value**, **LDS**, and **HDS** values as shown.

35. When all values are entered, click **Save**.

36. Now that the three new SmartStock sources are set up, **update the price tape** to migrate your parts to the correct sources.

Important: A price tape update must be performed to migrate parts.

Monthly Reporting

Within the first five working days of the month, you must report certain figures from your Autosoft system. The required data auto-populates in the Hyundai SmartStock Report, which should be run on the last working day of the month prior to running the month-end procedure. To access the Hyundai SmartStock Report:

1. From the Parts Inventory main menu, click **Reports**.
2. Click **Miscellaneous Reports**.
3. In the Miscellaneous Reports menu, click **Hyundai SmartStock Report**.
4. When prompted to verify that your printer is ready, choose to print **To Printer** or **To Screen**.
5. Click **Print**.

The data should be entered directly through the HyundaiDealer.com website. On about the eighth working day of the month, your trend report will be available on the Hyundai Dealer Dashboard, which displays up to six months' tracking of important inventory performance measurements calculated from the figures you supplied. A rolling six-month average is also calculated and included on your tracking report.

Tip: Maintaining hard copies of your month-end SmartStock® Inventory Management reports will make it easier for you to review the details supporting the performance trends.

Important: Collision parts (**SubSources 904, 905, and 906**) will no longer be controlled by SmartStock stocking parameters, as dealers will now have to manage these SubSources. Dealers will not be scored on the aging, purchase efficiency, etc. of their collision inventory.

Hyundai SmartStock Monthly Report

Hyundai SmartStock Monthly Report Form: _____

Parts Manager _____
 Dealer Name _____
 Street Address _____
 City, State, Zip _____

Dealer Code: _____
 Phone: _____
 Fax: _____

INVENTORY BALANCE/INVESTMENT			DOLLARS
TOTAL SYSTEM INVENTORY (Dollars)			\$
	PARTS/LINES		DOLLARS
ACTIVE (NORMAL STOCK)			\$
NON-STOCK PARTS (STATUS NS)			\$

RECEIPTS	PARTS/LINES	PIECES	DOLLARS
TOTAL RECEIPTS			\$
CUSTOMER & EMERGENCY RECEIPTS			\$

SALES (PER INVENTORY SYSTEM)	PARTS/LINES	PIECES	DOLLARS
TOTAL GROSS SALES (COST OF SALES)			\$
TOTAL RETURN SALES			\$

LOST SALES	PARTS/LINES	PIECES	DOLLARS
LOST SALES			\$

INVENTORY MOVEMENT/ACTIVITY (PARTS COST)			DOLLARS
LAST ACTIVE 1-3 MO \$ (R&R users please combine current with 1-3)			\$
LAST ACTIVE 4-6 MO \$			\$
LAST ACTIVE 7-12 MO \$ (R&R users please combine 7-9 with 10-12)			\$
LAST ACTIVE OVER 12 MO \$ (R&R users please combine 13-24 with 25+)			\$
NEW PARTS NO SALES (ADP ONLY)			\$